

Südmetall®



ÜLOCK

LOCKING SYSTEMS
MAIN CATALOGUE **2023**

ÜLOCK LOCKS
ÜHANDLE
STAND ALONE SOLUTIONS
ÜLOCK NOVUS
STRIKE PLATES
ÜLINDER
ÜMANAGEMENT
ÜLOCK BLE
SWITCHING MODE POWER SUPPLY



SÜDMETALL stands for...

... expertise, experience and excellent service. The company Süd-Metall Schließsysteme Leipzig GmbH was established in the year 2013 as a division of the Almar Südmetall Group. Süd-Metall Schließsysteme Leipzig GmbH focuses on developing and producing electronic access solutions based on electro-mechanical locks "Made in Germany".

In their daily work our staff is guided by the company values of "competence, reliability and fairness" with a strong focus on customer service. Südmetall already leads the

market in the German-speaking world in the product range of fittings and metal and glass construction. The many years of market experience of the Almar Südmetall Group and the know-how of the development engineers in the field of locking systems produce synergy effects that are reflected in the quality of the products.

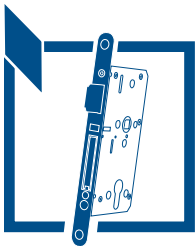
The concentration of development and production at the Leipzig site allows an optimisation of the development times and facilitates the subsequent commercial launch.





metall

COMPONENTS



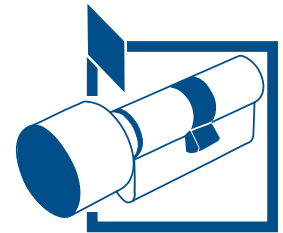
ÜLOCK



ÜHANDLE



ÜLOCK NOVUS



ÜLINDER

SYSTEMS



STAND ALONE



ÜMANAGEMENT 2.0

ÜLOCK NOVUS



ÜLOCK NOVUS - THE INCONSPICUOUSNESS MAKES THE DIFFERENCE

A product that does not compromise on design and sets a new benchmark in the housing of electronics in terms of safety on the product, is compatible with the trend of Bluetooth connectivity and opening, and creates new standards in the field of sustainability.

As security at the door has always been a basic human need, Südmetall has made it its business to integrate all access control electronics into the lock. All sensitive components are contained in the lock case and are protected by both the door and the lock. On the outside of the key rosette, there is only the reader unit, which forwards the card data to the evaluation unit



in the lock and cannot be manipulated. Bluetooth in combination with smartphone apps are gaining ground on the European market. Südmetall follows this trend and has equipped the new Ülock Novus with a Bluetooth module. With the help of this Bluetooth interface, both control via smartphone and specific variants for OEM customers can be realized.

The RFID reader unit of the Ülock Novus is accommodated in the smallest possible space in the key rosette. As a result, lever handle models can be freely selected in terms of design and color, and a mechanical profile cylinder for emergency opening is also retained - design requirements no longer have to give way to functional solutions.

DESIGN

- Handle models are freely selectable in terms of design and color selection
- Special colors, PVD and antimicrobial surfaces (ABACO) possible
- No additional components required, such as readers on the wall

SECURITY

- The electronics are protected in the lock case, only the tamper-proof reading unit is located on the outside
- The sensitive components are therefore not visible and are protected by the lock and door
- 20 mm mechanical self-locking of the Ülock
- Emergency opening by cylinder key still possible

OPERATION

- Opening by RFID medium or smartphone (BLE)
- Easy retrofitting, as it can be used in almost all standard doors
- No additional components, drilling or milling necessary
- Customized variants available for OEM partners

ÜLOCK LOCKS - WIRELESS OR BLUETOOTH

ACCESS CONTROL ON BOTH SIDES OF THE DOOR

ÜLOCK - B

- External lever handle can be electrically coupled
- Protection of human life through panic function in escape direction

ÜLOCK - Z

- Both handles electrically engageable
- NO panic function
- Protection of property from the outside
 - Automatic self-locking: door is always locked by a 20 mm whisper latch bolt
 - Burglary protection: high resistance class of the lock against mechanical manipulation
 - No attack surface from the outside, all electronics are in the lock case
 - Encrypted data transmission between lock and control system (AES 128)

COMFORT AND DESIGN

- Free choice of the fittings according to the design requirements of the object
- Stand-alone as well as system solutions can be realized
- Mechanical emergency opening by means of cylinder key always possible

PERFECT FOR RETROFITTING

- Can be used in fire doors
- No wiring of the door required (ÜLock-B Battery + Inductive)
- Compatible with control systems from a wide range of suppliers
- Easy to combine with existing profile cylinders, fittings and control systems
- All common dimensions available



TABLE OF CONTENTS



ÜLOCK NOVUS

PAGE

8



ÜLOCK BATTERY

PAGE

12



ÜLOCK INDUCTIVE

PAGE

14



I / O MODULE

PAGE

16



GLASS DOOR LOCK

PAGE

20



STAND ALONE SOLUTIONS

PAGE

22



ÜLOCK CABLE

PAGE

24



ÜLOCK BASIC

PAGE

29



STRIKE PLATES

PAGE

30



ÜLINDER

PAGE

34



ÜHANDLE

PAGE

36



VOXIO TOUCH

PAGE

44



ÜLOCK MOBILE ACCESS

PAGE

46



ÜMANAGEMENT 2.0

PAGE

48



SAMPLE STAND

PAGE

56



FITTINGS

PAGE

58



ÜBAR PANIC BAR

PAGE

62



RFID IDENT MEDIA

PAGE

63



SWITCHING POWER SUPPLIES

PAGE

64



ORDERING HELP

PAGE

66

ÜLOCK NOVUS BATTERY



FULL LEAF Comfort or Premium



General product features:

- › External lever handle electrically engageable
- › Premium variant incl. certificates:
EN 179 / EN 1125 / EN 1634-1 / EN 14846
- › Panic function self-locking,
whisper latchbolt 20 mm (stainless steel)
- › Electronics protected in lock case
- › Tamper-proof
- › 2 standard long-life batteries invisible in the lock case
(AAA Energizer Ultimate Lithium)
- › Easy to retrofit, no additional components required
- › Easy and quick battery replacement without tools
- › Operation by RFID medium or smartphone
(in preparation)

RFID reader features

- › Card/transponder format:
Mifare Classic 1k/4k and DESFire EV1/EV2
- › Configuration:
Configuration card is programmed using
ÜManagement 2.0 software

OSS in preparation



Distance	Backset	Forend (ground stainless steel) Standard rounded			
		20x235x3	24x235x3	20x280x3	24x280x3
🇩🇪 DIN PZ					
72	55	X	X		
72	60	X	X		
72	65	X	X		
72	80	X	X		
92	65			X	X
92	80			X	X
🇦🇹 Ö-Norm PZ					
		18x250x3	20x250x3	20x300x3	
88	50	X	X	X	
88	55	X	X	X	
88	60	X	X	X	
88	65	X	X	X	
88	70	X	X	X	

Marked blue = stock items (available at short notice)



A SELECTION OF SUITABLE FITTINGS FOR BATTERY AND INDUCTIVE



RONNY Top Speed



HANNA Top Speed



PAULA Top Speed



PATRIK Top Speed



MADRID Top Speed



SIRIUS Top Speed



ZOE Top Speed



ERIKA Top Speed



JILL Top Speed

ÜLOCK NOVUS INDUCTIVE



FULL LEAF Comfort or Premium

General product features:

- › External lever handle electrically engageable
- › Premium variant incl. certificates:
EN 179 / EN 1125 / EN 1634-1
- › Panic function self-locking,
whisper latchbolt 20 mm (stainless steel)
- › Electronics protected in lock case
- › Inductive energy transmission - no battery change
and no wiring of the door leaf required
- › ÜLock Novus Inductive - The solution for a
sustainable future
- › Operation by RFID medium or smartphone
(in preparation)

RFID reader features

- › Card/transponder format:
Mifare Classic 1k/4k and DESFire EV1/EV2
- › Configuration:
Configuration card is programmed using
ÜManagement 2.0 software

OSS in preparation



Distance	Backset	Forend (ground stainless steel) Standard rounded			
		20x235x3	24x235x3	20x280x3	24x280x3
🇩🇪 DIN PZ					
72	55	X	X		
72	60	X	X		
72	65	X	X		
72	80	X	X		
92	65			X	X
92	80			X	X
🇦🇹 Ö-Norm PZ					
		18x250x3	20x250x3	20x300x3	
88	50	X	X	X	
88	55	X	X	X	
88	60	X	X	X	
88	65	X	X	X	
88	70	X	X	X	

Marked blue = stock items (available at short notice)



A SELECTION OF SUITABLE FITTINGS FOR BATTERY AND INDUCTIVE



ALASKA Top Speed



ELIO Top Speed



MOUNT EVEREST Top Speed



KORSIKA Top Speed



ARENA Top Speed



RONNY Top Speed



KORSIKA Top Speed



MALIBU Top Speed



ALASKA Top Speed
Polished brass on request

ÜLOCK BATTERY FULL LEAF



FULL LEAF Comfort or Premium

General product features for ÜLock-B and ÜLock-Z:

- › Self-locking, whisper latch bolt 20 mm (stainless steel)
- › Radio and electronics protected in lock case
- › Tamper-proof, programming button integrated in battery case, this can only be opened with cylinder key
- › Up to 99 operating units can be used per lock
- › Radio frequency: 868.3 MHz / encryption AES 128
- › Standard long-life batteries (AAA Energizer Ultimate Lithium)

Specification ÜLock-B:

- › Outside lever handle can be electrically coupled
- › Active radio
- › Premium variant incl. certificates: EN 179 / EN 1125 / EN 1634-1 / EN 14846
- › Panic function

Specification ÜLock-Z:

- › Both handles can be electrically coupled
- › No panic function!
- › Premium variant incl. certificates: EN 1634-1 / EN 14846

Distance	Backset	Forend (ground stainless steel) Standard rounded			
🇩🇪 DIN PZ					
		20x235x3	24x235x3	20x280x3	24x280x3
72	55	X	X		
72	60	X	X		
72	65	X	X		
72	80	X	X		
92	65			X	X
92	80			X	X
🇦🇹 Ö-Norm PZ					
		18x250x3	20x250x3	20x300x3	
88	50	X	X	X	
88	55	X	X	X	
88	60	X	X	X	
88	65	X	X	X	
88	70	X	X	X	
🇨🇭 RZ					
		20x235x3	24x235x3	18x230x3	20x230x3
74	65	X	X		
78	60			X	X
78	70			X	X
78	80			X	X

Marked blue = stock items (available at short notice)



TUBE FRAME Comfort or Premium

General product features for ÜLock-B and ÜLock-Z:

- › Self-locking, whisper latch bolt 20 mm (stainless steel)
- › Radio and electronics protected in lock case
- › Tamper-proof, programming button integrated in battery case, this can only be opened with cylinder key
- › Up to 99 operating units can be used per lock
- › Radio frequency: 868.3 MHz / encryption AES 128
- › Standard long-life batteries (Standard Lithium Batterie 1/2 AA 3,6V)

Specification ÜLock-B:

- › Outside lever handle can be electrically coupled
- › Active radio possible
- › Premium variant incl. certificates: EN 179 / EN 1634-1 / EN 14846
- › Panic function

Specification ÜLock-Z:

- › Both handles can be electrically coupled
- › No panic function!
- › Premium variant incl. certificates: EN 1634-1

Distance | Backset | Forend (ground stainless steel)
Standard square

		Germany DIN PZ	Austria Ö-Norm PZ			
			24x245x3	24x270x3	28x270x3	
92	35		X	X	X	
92	40		X	X	X	
92	45		X	X	X	

		Switzerland RZ				
			24x245x3	24x270x3	28x270x3	
94	35		X	X	X	
94	40		X	X	X	
94	45		X	X	X	

Marked blue = stock items (available at short notice)

Strike plates are **NOT** included in delivery.

Suitable striking plates can be found on page 30.

ÜLOCK INDUCTIVE FULL LEAF



FULL LEAF Comfort or Premium

General product features for ÜLock-B and ÜLock-Z:

- › Self-locking, whisper latch bolt 20 mm (stainless steel)
- › Radio and electronics protected in lock case
- › Up to 99 operating units can be used per lock
- › Radio frequency: 868.3 MHz / encryption AES 128
- › Inductive energy transmission - no battery change and no wiring of the door leaf required

Specification ÜLock-B:

- › Outside lever handle can be electrically coupled
- › Active radio possible
- › Premium variant incl. certificates:
EN 179 / EN 1125 / EN 1634-1

Specification ÜLock-Z:

- › Both handles can be electrically coupled
- › No panic function!
- › Premium variant incl. certificates:
EN 1634-1

Distance	Backset	Forend (ground stainless steel)			
		Standard rounded			
🇩🇪 DIN PZ					
		20x235x3	24x235x3	20x280x3	24x280x3
72	55	X	X		
72	60	X	X		
72	65	X	X		
72	80	X	X		
92	65			X	X
92	80			X	X
🇦🇹 Ö-Norm PZ					
		18x250x3	20x250x3	20x300x3	
88	50	X	X	X	
88	55	X	X	X	
88	60	X	X	X	
88	65	X	X	X	
88	70	X	X	X	
🇨🇭 RZ					
		20x235x3	24x235x3	18x230x3	20x230x3
74	65	X	X		
78	60			X	X
78	70			X	X
78	80			X	X

Marked blue = stock items (available at short notice)



World Innovation

Inductive energy transmission

Without battery. Without cable.



TUBE FRAME Comfort or Premium

General product features for ÜLock-B and ÜLock-Z:

- › Self-locking, whisper latch bolt 20 mm (stainless steel)
- › Radio and electronics protected in lock case
- › Up to 99 operating units can be used per lock
- › Radio frequency: 868.3 MHz / encryption AES 128
- › Inductive energy transmission - no battery change and no wiring of the door leaf required

Specification ÜLock-B:

- › Outside lever handle can be electrically coupled
- › Active radio possible
- › Premium variant incl. certificates: EN 179 / EN 1634-1 / EN 14846

Specification ÜLock-Z:

- › Both handles can be electrically coupled
- › No panic function!
- › Premium variant incl. certificates: EN 1634-1 / EN 14846

Distance	Backset	Forend (ground stainless steel) Standard square		
		24x245x3	24x270x3	28x270x3
DE DIN PZ				
AT Ö-Norm PZ				
92	35	X	X	X
92	40	X	X	X
92	45	X	X	X
CH RZ				
94	35	X	X	X
94	40	X	X	X
94	45	X	X	X

Marked blue = stock items (available at short notice)

Strike plates are **NOT** included in delivery.

Suitable striking plates can be found on page 30.



I/O MODULE

The I/O module enables existing access systems to communicate with Südmetall locking system products. Thus, existing and new systems can be combined and ÜLock locks can be easily retrofitted.

Product features:

- › Supply voltage: 12 - 24V DC
- › Unlocking: Short-time open
Long-term open until revoked
- › Control: potential contact
- › Programming: via programming button in the lock
- › Dimension: 46 x 46 x 20 mm
- › Installation: flush-mounted box
- › Active radio connection between ÜLock and I/O module



Feedback:

- › Feedback 1: Selectable variants
 - Outside lever handle activated
 - Latch bolt extended (door is secured)
 - Lock cylinder actuated
- › Feedback 2: ÜLock battery low

Variants with external antenna optionally available



RADIO RECEIVER MODULE

The radio receiver module enables the control of on-site actuators with radio hand-held transmitters, RFID readers and keypads by radio. This means that existing systems (e.g. locks, rolling gates, barriers) can be easily integrated into a Südmetall access control system.

Product features:

- › Supply voltage: 12 - 24V DC
- › Output: potential-free toggle contact
- › Control: via radio 868MHz (Südmetall specific encryption)
- › Programming: via the programming button in the I/O module
- › Dimension: 46 x 46 x 20 mm
- › Installation: flush-mounted box





I/O MODULE EWS ECO

The I/O module enables existing access systems to communicate with the Südmittel ÜLock-B Inductive. The connection between the lock and the I/O module is made via radio. The transmitted data is protected against manipulation by means of AES 128 encryption.

ACTIVE RADIO

Thanks to an active radio connection between ÜLock and I/O module, status changes are detected and transmitted at any time.

For example, the message „Locked“ can be permanently monitored or the message „Handle actuated“ can be transmitted.

Product features:

- › Supply voltage: 12V DC / 24V DC
- › Unlocking: Short-time open
Long-term open until revoked
- › Control: potential-free contact
- › Dimension: 125 x 125 x 53 mm
- › Installation: Surface-mounted housing
IP54
- › Programming: via programming button in the lock
- › Active radio connection between ÜLock and I/O module



1	+ 12VDC IN
2	+ 24VDC IN
3	GND IN
4	GND OUT
5	+ 12V DC OUT (max. 200mA)
6/7	Connection to ÜLock Cable
IN 1	Short unlocking
IN 2	Open (OPEN)
IN 3	Closing (CLOSED)
IN 4	Edge-controlled opening and closing
IN 5	External door contact
Out 1	Door closed (NO) („latch bolt locked“ NO AND „ext. door contact“ closed)
Out 2	Cylinder key operated (NO)
Out 3	Handle 1 actuated (NO)
Out 4	Handle 2 actuated (NO)
Out 5	Door closed (NO) („latch bolt locked“ AND „lever handle disengaged“)
Out 6	Sabotage (NC)
Out 7	Lever handle engaged (NO) / Handle disengaged (NC)

HOW THE I/O MODULE WORKS



ÜLOCK - CONTROL ON SITE

With the help of the I/O module, the ÜLock can be controlled by any on-site system, for example:

- › The already installed access control system
- › The door intercom system
- › An intruder alarm system

The I/O module can be installed in a flush-mounted box near the door (max. 5 m distance to the ÜLock). Pairing with the ÜLock is very easy by pressing the programming button in the lock.

Two inputs are available in the I/O module for control:

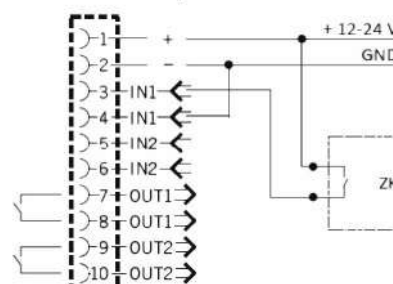
- › Short-time unlocking (IN 1)
After activation, the handle automatically disengages after the time has elapsed
- › Edge-controlled (IN 2)
The lever handle is activated as long as the input „IN 2“ is activated (The activation time is defined, for example, by the on-site access control)

If required, status information of the ÜLock can be tapped directly at the I/O module.

- › Out 2: Low battery message
- › Out 1: Depending on the variant, Out 1 is assigned the status message „Outside trigger activated“; „Locked = latch bolt extended“; or „Locking cylinder actuated“



Anschalt-Beispiel



ÜLOCK - CONTROL WITH INTERCOM



ÜLOCK GLASS DOOR



EVERYTHING FROM ONE SOURCE - THAT'S SÜDMETALL

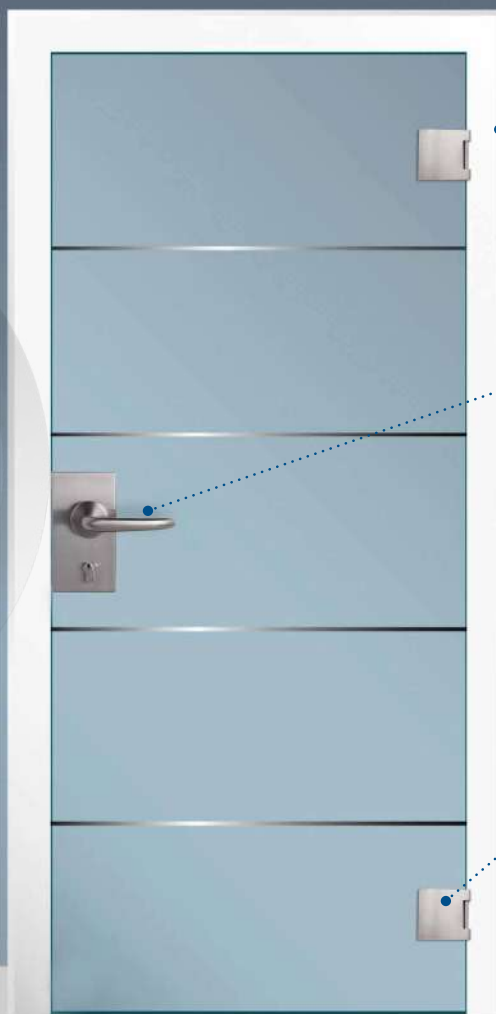
I/O MODULE

The I/O module enables existing access systems to communicate with Südmetall locking system products. This allows existing and new systems to be combined and ÜLock locks to be easily retrofitted.



Control system

- › Can be integrated into common access control systems
- › Keypad, RFID, Fingerscan possible



Glass door hinges

- › 2-piece or 3-piece available

(You can find more glass door hinges in our catalog „Fascination Fittings“)

Fittings

- › Top Speed or Flat fittings can be used

(Many different designs can also be found in our catalog „Fascination Fittings“)

Frame mountings

- › Wood or steel frame

(You can find more information in our catalog „Fascination Fittings“)



GLASS DOOR LOCK

Comfort

Product features:

- › Distance dimension: 72 mm
- › Backset: 55 mm
- › Self-locking, whisper latch bolt 20 mm (stainless steel)
- › Radio and electronics protected in lock case
- › Tamper-proof, programming button integrated in the battery compartment; this can only be opened with cylinder key
- › Up to 99 authorizations can be assigned per lock
- › Radio frequency: 868.3 MHz / encryption AES 128
- › Standard long-life batteries (AAA Energizer Ultimate Lithium)
- › Can be combined with Vario Star Top Speed and Flat fittings from Südmetail
- › Round cylinder version available

Specification ÜLock-B:

- › Outside lever handle electrically engageable
- › Active radio
- › Panic function

Specification ÜLock-Z:

- › Both handles can be electrically coupled
- › No panic function!



MATCHING BOX

Comfort

Product features:

- › For use in combination with the glass door lock
- › Stainless steel housing
- › 180 x 96 x 14 mm

WIRELESS STAND ALONE SOLUTIONS



..... are ideal for small to medium-sized properties with a manageable number of doors and users where networking is not required. The control systems offered here are optimized for combination with ÜLock-B locks.

Therefore, a high security standard can be guaranteed. The lock and the control system are simply connected to each other via a teach-in button located in the lock case.



BIO KEY FINGERSCAN

The finger scan is an ideal solution for small to medium-sized properties, because the user's own fingerprint is unmistakable and is therefore ideally suited for use in the course of an access control system. There is no longer any risk of being locked out or losing the key. The reading surface is permanently temperature-controlled to 29°C and encapsulated to IP 65 to make it dustproof and waterproof. The control system and lock communicate with each other via radio.

Product features:

- › Memory locations: up to 150 fingers can be taught-in
- › Transceiver unit: integrated
- › Operating voltage: 12 - 24V DC
- › Memory management: as option
- › Data transmission: encrypted via AES 128
- › Surface: stainless steel
- › Radio frequency: 868 MHz



BATTERY SURFACE KEYBOARD

The Bio Key keypad is a convenient access solution for small and medium-sized businesses, as well as for private households. The danger of being locked out or losing your key is a thing of the past. The outdoor unit is encapsulated dust and waterproof according to IP 65. Keypad and lock communicate with each other via radio.

Product features:

- › High quality surface mounted housing
- › Up to 99 PIN codes possible
- › Radio interface integrated in reader (868 MHz / AES 128 v)
- › User codes between 1 and 8 digits selectable
- › Optionally battery operated or 12V DC
- › Blue backlight (not with battery operation)
- › Colors: silver and black



REMOTE CONTROL

The remote control offers the greatest comfort and is comparable with a car remote control. Equipped with AES 128 encryption, radio signals cannot be misused. The hand-held transmitter offers two opening variants: short-term open or long-term open until revoked.

Product features:

- › Memory locations: can be taught in any number of locks
- › Radio frequency: 868.3 MHz
- › Battery: lithium button cell CR 2032
- › Data transmission: encrypted via AES 128
- › Range: up to 5 meters depending on environment and door condition
- › Opening function: short time open for 5 sec. / long time open until revoked



ÜLOCK CABLE FULL LEAF



FULL LEAF Premium

General product features for ÜLock-B and ÜLock-Z:

- › Spindle: 9 mm
- › Cylinder: Profile cylinder (PZ), round cylinder (RZ)
- › Self-locking, whisper latch bolt 20 mm (stainless steel)
- › Power supply and control by means of a connection cable (2-wire, for connecting the of the lock with the I/O module EWS Eco)
- › Data transmission secured against manipulation
- › Potential-free feedback available on the I/O module

Specification ÜLock-B:

- › Outside lever handle electrically engageable
- › Panic function
- › Certificates: EN 179 / EN 1125 / EN 1634-1

Specification ÜLock-Z:

- › Both handles can be electrically coupled
- › No panic function!
- › Premium variant incl. certificates: EN 1634-1

Distance	Backset	Forend (ground stainless steel) Standard rounded			
		20x235x3	24x235x3	20x280x3	24x280x3
DE DIN PZ					
72	55	X	X		
72	60	X	X		
72	65	X	X		
72	80	X	X		
92	65			X	X
92	80			X	X
AT Ö-Norm PZ					
		18x250x3	20x250x3	20x300x3	
88	55	X	X	X	
88	60	X	X	X	
88	65	X	X	X	
88	70	X	X	X	
CH RZ					
		20x235x3	24x235x3	18x230x3	20x230x3
74	65	X	X		
78	60			X	X
78	70			X	X
78	80			X	X

Marked blue = stock items (available at short notice)

Striking plates are **NOT** included in the delivery.

Suitable strike plates can be found on page 30.



TUBE FRAME Premium

General product features for ÜLock-B and ÜLock-Z:

- › Spindle: 9 mm
- › Cylinder: Profile cylinder (PZ), round cylinder (RZ)
- › Self-locking, whisper latch bolt 20 mm (stainless steel)
- › Power supply and control by means of a connection cable (2-wire, for connecting the of the lock with the I/O module EWS Eco)
- › Data transmission secured against manipulation
- › Potential-free feedback available on the I/O module

Specification ÜLock-B:

- › Outside lever handle electrically engageable
- › Panic function
- › Certificates: EN 179 / EN 1125 / EN 1634-1

Specification ÜLock-Z:

- › Both handles can be electrically coupled
- › No panic function!
- › Premium variant incl. certificates:
EN 1634-1

Distance | Backset | Forend (ground stainless steel)
Standard square

		Germany DIN PZ	Austria Ö-Norm PZ			
			24x245x3	24x270x3	28x270x3	
92	35		X	X	X	
92	40		X	X	X	
92	45		X	X	X	

		Switzerland RZ				
			24x245x3	24x270x3	28x270x3	
94	35		X	X	X	
94	40		X	X	X	
94	45		X	X	X	

Marked blue = stock items (available at short notice)

Striking plates are **NOT** included in the delivery.

Suitable strike plates can be found on page 30.

ÜLOCK CABLE



1	+ 12VDC IN
2	+ 24VDC IN
3	GND IN
4	GND OUT
5	+ 12V DC OUT (max. 200mA)
6/7	Connection to the ÜLock Cable
IN 1	Short-time unlocking
IN 2	Open (OPEN)
IN 3	Close (CLOSED)
IN 4	Edge-triggered opening and closing
IN 5	Outside door contact
Out 1	Door closed (NO) ("Latch locked" NO AND „ext. door contact“ closed) Out
Out 2	Cylinder key activated (NO)
Out 3	Handle 1 activated (NO)
Out 4	Handle 2 activated (NO)
Out 5	Locked(NO) ("Latch locked" AND "Handle disengaged")
Out 6	Sabotage (NC)
Out 7	Handle engaged (NO) / Handle disengaged (NC)



I/O module EWS Eco



Connecting cable:
 > 2-wires



I/O MODULE EWS ECO

The I/O module enables existing access systems to communicate with the Südmittel ÜLock-B Cable. The connection between the lock and the I/O module is made via a two-wire connection cable. The transmitted data is protected against manipulation by AES 128 encryption.

Product features:

- › Supply voltage: 12V DC / 24V DC
- › Unlocking: Short-term open
Long-term open until revoked
- › Control: potential free contact
- › Dimension: 125 x 125 x 53 mm
- › Installation: surface mount housing IP54
- › Feedback signals: see page 26



CONNECTION CABLE

2-wire flexible connection cable for connecting the ÜLock-B Cable with the I/O module EWS Eco.

Product features:

- › Length: 10 m
- › Diameter: 4 mm



CABLE SPIRAL

The standard cable transition set serves as cable protection in the area of moving to fixed elements such as doors, windows, etc.

Product features:

- › Length: 500 mm
- › Colors: White/Silver
- › Inner diameter: 10 mm
- › Outer diameter: 13 mm



CABLE TRANSITION MD 1188

Cable spiral including receiving tray for concealed routing of the connecting cable from the door leaf into the frame.

Product features:

- › Dimension: 20 x 346 x 15 mm (WxHxD)
- › Spiral spring EN 10270-1 DH
- › Length: 337 mm
- › Inner diameter: 8 mm
- › Outer diameter: 10,8 mm
- › Opening angle: 180°
- › Corrosivity category C3, DIN EN ISO 12944-2
- › Max. cable diameter: max. 6 mm
- › Cable loop min. 30 mm at the mounting box or spiral spring

ÜLOCK CABLE SMART



FULL LEAF Premium

The ÜLock Cable Smart enables very simple electrical activation of the door handle by an access control without separate control.

General product features:

- › Spindle: 9 mm
- › Cylinder: profile cylinder (PZ), round cylinder (RZ)
- › Self-locking (whisper latch bolt...)
- › Sustainable thanks to very low power consumption
- › No separate control required
- › Connection voltage: 12V DC, max 150mA
- › Simple activation by an „active low“ command directly on the ÜLock
- › The trigger is activated as long as the input is „low“

Specification ÜLock-B:

- › Outside lever handle electrically engageable
- › Panic function
- › Certificates:
EN 179 / EN 1125 / EN 1634-1 / EN 14846

Specification ÜLock-Z:

- › Both handles can be electrically coupled
- › No panic function!
- › Premium variant incl. certificates:
EN 1634-1 / EN 14846

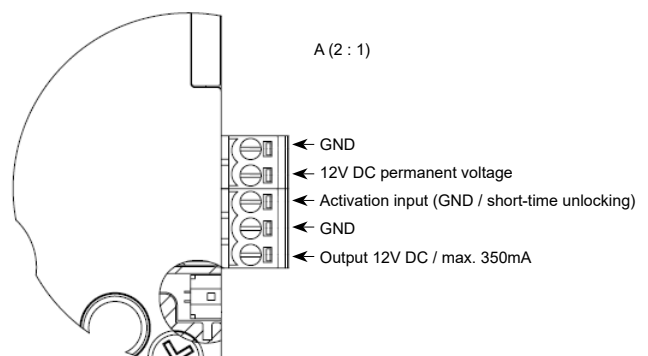


Distance	Backset	Forend (ground stainless steel) Standard rounded			
DE DIN PZ					
		20x235x3	24x235x3	20x280x3	24x280x3
72	55	X	X		
72	60	X	X		
72	65	X	X		
72	80	X	X		
92	65			X	X
92	80			X	X
AT Ö-Norm PZ					
		18x250x3	20x250x3	20x300x3	
88	55	X	X	X	
88	60	X	X	X	
88	65	X	X	X	
88	70	X	X	X	
CH RZ					
		20x235x3	24x235x3	18x230x3	20x230x3
74	65	X	X		
78	60			X	X
78	70			X	X
78	80			X	X

Marked blue = stock items (available at short notice)

Connection cable

Flexible connection cable, compatible with ÜLock-B Cable Smart





FULL LEAF Premium

General product features:

- › Self-locking, whisper latch bolt 20 mm (stainless steel)
- › Mechanical securing of progress
- › Continuous handle spindle: 9 mm
- › Cylinder: profile cylinder (PZ), round cylinder (RZ)
- › Suitable for use in combination with ÜBar panic bar
- › Switching function

Specification ÜLock-B:

- › Outside lever handle electrically engageable
- › Panic function
- › Premium variant incl. certificates:
EN 179 / EN 1125 / EN 1634-1 / EN 14846

Distance	Backset	Forend (ground stainless steel) Standard rounded			
DE DIN PZ					
		20x235x3	24x235x3	20x280x3	24x280x3
72	55	X	X		
72	60	X	X		
72	65	X	X		
72	80	X	X		
92	65			X	X
92	80			X	X
AT Ö-Norm PZ					
		18x250x3	20x250x3	20x300x3	
88	50	X	X	X	
88	55	X	X	X	
88	60	X	X	X	
88	65	X	X	X	
88	70	X	X	X	
CH RZ					
		20x235x3	24x235x3	18x230x3	20x230x3
74	65	X	X		
78	60			X	X
78	70			X	X
78	80			X	X

Marked blue = stock items (available at short notice)

Strike plates are **NOT** included in the delivery.

Suitable strike plates can be found on page 30.

STRIKE PLATES



ÜLOCK STRIKE PLATE

for full leaf doors

Strike plate for use in combination with the ÜLock Battery, ÜLock- Cable or ÜLock Basic.

Product features:

- › Material: stainless steel
- › DIN-L rebate door / DIN-R rebate door

Dimension:

170 x 20 x 3 mm



ÜLOCK STRIKE PLATE

for full leaf doors

Strike plate for use in combination with the ÜLock Battery, ÜLock- Cable or ÜLock Basic.

Product features:

- › Material: stainless steel
- › DIN-L flush door / DIN-R flush door

Dimension:

170 x 24 x 3 mm



ÜLOCK ANGLE STRIKE PLATE

for full leaf doors

Strike plate for use in combination with the ÜLock Battery, ÜLock- Cable or ÜLock Basic.

Product features:

- › Material: stainless steel
- › DIN-L rebate door / DIN-R rebate door

Dimension:

25_32 x 250 x 2 mm

25_15 x 250 x 2 mm



ÜLOCK U STRIKE PLATE

for full leaf doors

Strike plate for use in combination with the ÜLock Battery, ÜLock- Cable or ÜLock Basic.

Product features:

- › Material: stainless steel
- › DIN-L rebate door / DIN-R rebate door

Dimension:

28 x 170 x 8 mm



ÜLOCK STRIKE PLATE

for tubular frame doors

Strike plate for use in combination with the ÜLock Battery.

Product features:

- › Material: stainless steel
- › DIN L/R usable

Dimension:

- 245 x 24 x 3 mm
- 270 x 24 x 3 mm
- 245 x 30 x 1,5 mm
- 270 x 28 x 3 mm



FOREND BOTTOM LINING

for tubular frame doors

With the help of these forend shims, the installation of the ÜLocks can be adapted to the respective profile design and the air gap in the area of the lock can be adjusted.

For shimming the forend or striking plate.

Product features:

- › Material: stainless steel
- › DIN L/R usable

Dimension:

- 245 x 24 x 3 mm
- 245 x 24 x 2 mm
- 270 x 24 x 3 mm

Special designs available on request!



ÜLOCK STRIKE PLATE

for full leaf doors

Strike plate for use in combination with the ÜLock Inductive.

Product features:

- › Material: stainless steel
- › Incl. transmitter unit
- › DIN-L flush door / DIN-R flush door
- › Lobe: 40 x 80

Dimension:

190 x 24 x 3 mm



ÜLOCK STRIKE PLATE

for full leaf doors

Strike plate for use in combination with the ÜLock Inductive.

Product features:

- › Material: stainless steel
- › Incl. transmitter unit
- › DIN-L rebate door / DIN-R rebate door

Dimension:

190 x 20 x 3 mm



ÜLOCK ANGLE STRIKE PLATE

for full leaf doors

Strike plate for use in combination with the ÜLock Inductive.

Product features:

- › Material: stainless steel
- › Incl. transmitter unit
- › DIN-L / DIN-R
- › Round or angular

Dimension:

25_32 x 250 x 2 mm

25_15 x 250 x 2 mm



ÜLOCK U STRIKE PLATE for full leaf doors

Strike plate optimized for steel frames, for the use in combination with the ÜLock Inductive.

Product features:

- › Material: stainless steel
- › Incl. transmitter unit
- › DIN-L / DIN-R

Dimension:

190 x 25 x 1,5 mm



ÜLOCK U STRIKE PLATE for full leaf doors

Strike plate optimized for steel frames, for the use in combination with the ÜLock Inductive.

Produktmerkmale:

- › Material: steel, silver painted
- › Incl. transmitter unit

Dimension:

170 x 28 x 8 mm



ÜLOCK STRIKE PLATE for tubular frame doors

Strike plate optimized for steel frames, for the use in combination with the ÜLock Inductive.

Product features:

- › Material: stainless steel
- › Incl. transmitter unit
- › DIN-L / DIN-R universal

Dimension:

245 x 24 x 3 mm
270 x 24 x 3 mm
270 x 28 x 3 mm

Special designs available on request!

ÜLINDER OVERVIEW STANDARD

ÜLINDER STANDARD

Universally applicable electronic cylinder for a wide variety of installation situations.

Cylinder lengths from 26/26 or 30/30 to 200/200 in 5 mm increments.



ELECTRONIC CYLINDER

The knob cylinder is an electronic locking cylinder with a one-sided authorization and is available in different cylinder lengths. It is possible to choose between indoor and outdoor versions (protection class IP66). The cylinder is available as a stand alone or software solution.



ELECTRONIC HALF CYLINDER

The electronic half cylinder can be used to equip doors from one side. It is possible to choose between indoor and outdoor versions (protection class IP66). The cylinder is available as a stand alone or software solution.



ELECTRONIC DOUBLE KNOB CYLINDER

The double knob cylinder is an electronic locking cylinder with separate electronic authorization on both sides. The cylinder is used to control access from both sides of the door. Authorizations are logged on both sides of the door. It is possible to choose between indoor and outdoor versions (protection class IP66). The cylinder is available as a stand alone or software solution.





ÜLINDER COMPACT

Narrow knob - for use in tubular frame doors, for example.

Cylinder lengths from 26/26 or 30/30 to 200/200 in 5 mm increments.



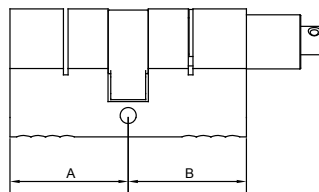
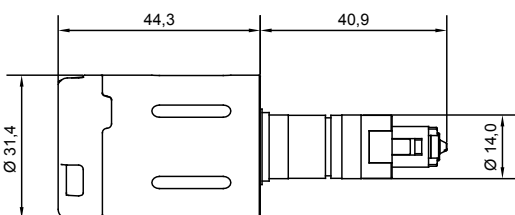
ELECTRONIC CYLINDER

The knob cylinder is an electronic locking cylinder, which is an optimal solution for tubular frame locks due to its small diameter. The complete mechanics and electronics are protected in the cylinder. In addition, a mechanical drilling protection is already integrated as standard. It is possible to choose between indoor and outdoor versions (protection class IP66). The cylinder is available as a stand-alone or software solution.



ELECTRONIC HALF CYLINDER

The half cylinder is an electronic locking cylinder, which is an optimal solution for tubular frame locks due to its small diameter. The complete mechanics and electronics are protected in the cylinder. In addition, a mechanical drilling protection is already integrated as standard. It is possible to choose between indoor and outdoor versions (protection class IP66). The cylinder is available as a stand-alone or software solution.



ÜHANDLE

The ÜHandle can be mounted on almost all conventional doors and controls access electronically. The entire electronics, mechanics, LED signaling and power supply are completely installed in the door handle in the smallest possible space.

This makes the product extremely flexible. The customer can choose between round and oval, with profile cylinder or without perforation. Different lever handle shapes allow further individualization. The variant with oval rosette also fits doors with very narrow frames.

The timeless and simple stainless steel design blends unobtrusively into any environment, whether in new buildings or in existing properties.



Product features:

- › Complies with current European lock standards
- › Existing locks can be used
- › Different lever handles to choose from (Ronny, Hanna, Paula)
- › Wireless
- › Automatic activation of the electronics by simply holding a key (passive transponder as card or transponder tag)
- › Continuous coupling without additional power consumption
- › Certified for fire and smoke protection doors according to DIN EN 1634 (depending on variant)
- › Certified for emergency exit locks according to DIN EN 179 (depending on variant)





THE ÜHANDLE IS AVAILABLE IN DIFFERENT HANDLE DESIGNS.



RONNY

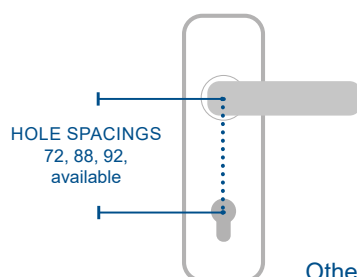


HANNA

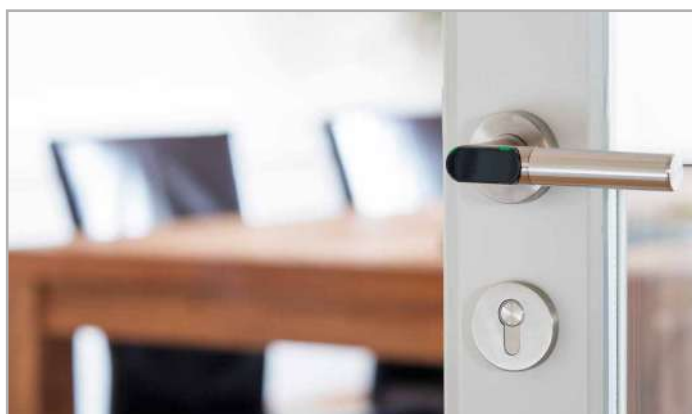


PAULA

LONG, WIDE AND SHORT SHIELD SETS AVAILABLE IN THE MOST COMMON EUROPEAN HOLE SPACING.



Other hole spacings on request!

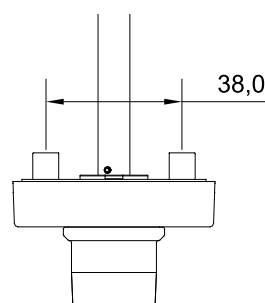
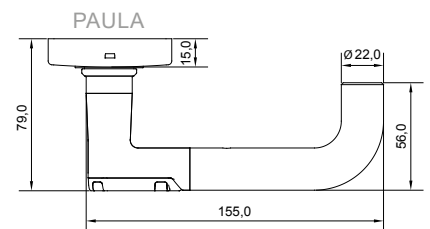
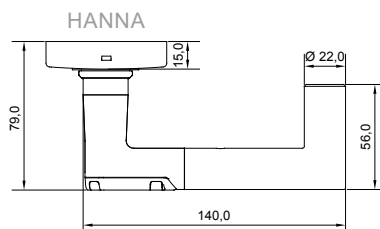
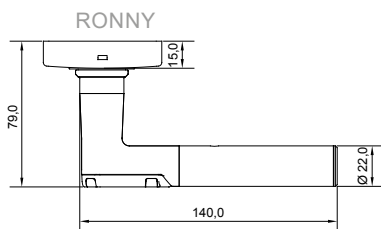




ÜHANDLE ROUND ROSETTE

Product features

- › Material: Stainless steel
- › Fixed/rotatable bearing
- › Top Speed quick mounting system
- › Round rosette Ø 55 mm
- › Spindle thickness 8 / 8.5 / 9 / 10 mm
- › Certified for fire and smoke protection doors DIN EN1634 (depending on variant)
- › Certified for emergency exit locks DIN EN 179 (depending on variant)
- › Profile cylinder (PZ), round cylinder (RZ) or blind rosette perforation
- › For indoor and outdoor use (IP66) possible
- › Mifare Classic 1k/4k and Desfire EV1/EV2

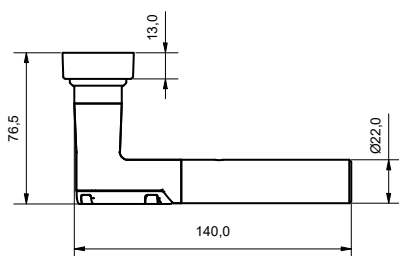
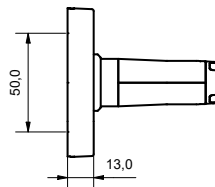
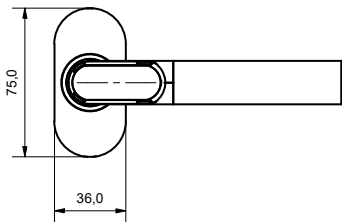




ÜHANDLE OVAL ROSETTE

Product features

- › Material: Stainless steel
- › Fixed/rotatable bearing
- › Top Speed quick mounting system
- › Oval rosette length 66 mm, width 36 mm
- › Spindle thickness 8 / 8.5 / 9 / 10 mm
- › Certified for fire and smoke protection doors DIN EN1634 (depending on variant)
- › Certified for emergency exit locks DIN EN 179 (depending on variant)
- › Profile cylinder (PZ), round cylinder (RZ) or blind rosette perforation
- › For indoor and outdoor use (IP66) possible
- › Mifare Classic 1k/4k and Desfire EV1/EV2

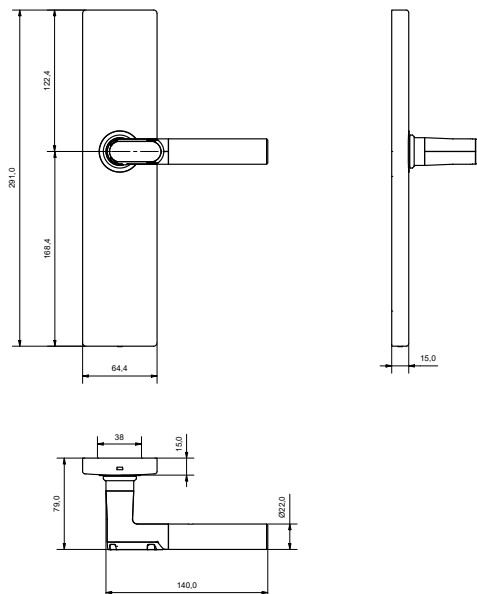




ÜHANDLE WIDE SHIELD

Product features

- › Material: Stainless steel
- › Fixed/rotatable bearing
- › Wide shield length 290.8 mm, width 64.4 mm
- › Easy retrofitting due to compatibility with standard rosette holes (38 mm)
- › Spindle thickness 8 / 8.5 / 9 / 10 mm
- › Certified for fire and smoke protection doors DIN EN1634 (depending on variant)
- › Certified for emergency exit locks DIN EN 179 (depending on variant)
- › Profile cylinder (PZ), round cylinder (RZ) or blind rosette perforation
- › For indoor and outdoor use (IP66) possible
- › Mifare Classic 1k/4k and Desfire



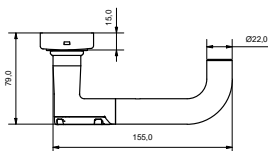
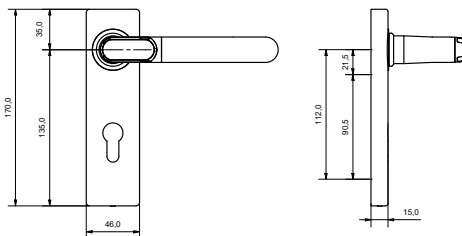


ÜHANDLE SHORT SHIELD



Product features

- › Material: Stainless steel
- › Fixed/rotatable bearing
- › Short shield length 170 mm, width 46 mm
- › Spindle thickness 8 / 8.5 / 9 / 10 mm
- › Certified for fire and smoke protection doors DIN EN1634 (depending on variant)
- › Certified for emergency exit locks DIN EN 179 (depending on variant)
- › Profile cylinder (PZ), round cylinder (RZ) or blind rosette perforation
- › For indoor and outdoor use (IP66) possible
- › Mifare Classic 1k/4k and Desfire

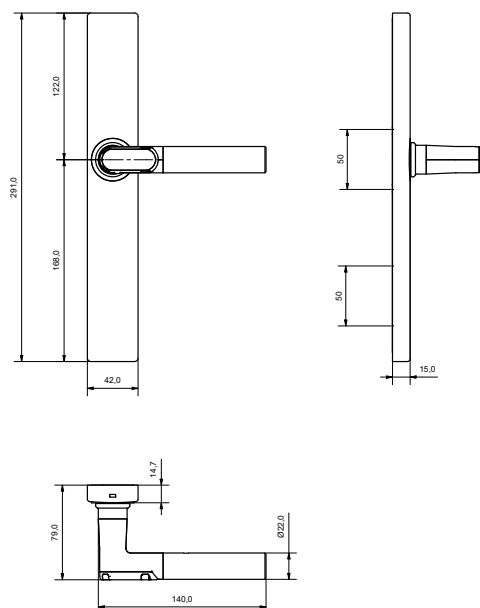




ÜHANDLE NARROW SHIELD

Product features

- › Material: Stainless steel
- › Fixed/rotatable bearing
- › Narrow shield length 290.8 mm, width 42.4 mm
- › Easy retrofitting due to compatibility with standard holes (50 mm)
- › Spindle thickness 8 / 8.5 / 9 / 10 mm
- › Certified for fire and smoke protection doors DIN EN1634 (depending on variant)
- › Certified for emergency exit locks DIN EN 179 (depending on variant)
- › Profile cylinder (PZ), round cylinder (RZ) or blind rosette perforation





BATTERY CHANGE TOOL

Special „changing tools“ are required to change the batteries. These must be ordered separately to match the ÜLinder.

With the ÜLinder Compact, the application of a magnet releases the cover for removal.

With the aid of the battery clip, the locking pins on the ÜLinder Standard can be pressed in and the cover then pulled off, provided that the release pins have previously been released by electronic authorization.



RADIO SWITCHING MODULE

For controlling the ÜLinder and ÜHandle (stand-alone version) by third-party readers with a potential-free contact.

- › Connection voltage: 8 - 12V DC
- › Dimension: 65 x 50 x 37



EMERGENCY POWER ADAPTER

For ÜLinder Standard.

VOXIO TOUCH READER

ÜLOCK + VOXIO TOUCH READER

ONLINE READER

The Voxio Touch readers (PHG) can be equipped with a Südmetall radio module. This enables direct coupling of the reader with a ÜLock Battery or ÜLock Inductive.

Product features:

- › Direct radio communication between Voxio Touch Online reader and ÜLock, no I/O module is required
- › The ÜLock offers both mechanical and electronic protection against manipulation
- › No wiring of the door leaf required, therefore optimal for retrofitting
- › The ÜLock is suitable for use in escape route doors and also fire doors
- › Comfortable access by coupling the outside lever handle
- › Control of the door handle by the system provider via PHG crypt protocol
- › Status information of the ÜLock is available to the system provider via PHG crypt protocol





VOXIO TOUCH STAND ALONE READER

The wall reader is available battery powered or with external supply voltage.

Product features:

- › Mounting: surface or flush mounting possible, dust- and waterproof (IP 54)
- › Compatible with various card standards:
 - ISO 14443A/B, Legic Prime / Advant
 - Mifare classic / DESFire, INSIDE (UID only)
 - SonyFeliCa (UID only)
- › Up to 320 authorizations per reader
- › Radio interface integrated in reader
- › 868 MHz / AES 128 encrypted
- › Tamper-proof transmission
- › Very easy coupling with the lock
- › No I/O module required
- › Attractive, modern design





The ÜLock BLE enables door opening via smartphone. The smartphone automatically connects to the ÜLock via Bluetooth as soon as it is close to the door. The control then takes place with the help of the corresponding cell phone app solution. This solution is ideal for offices, medical practices, hotels, vacation homes and much more.



ÜLOCK BATTERY / INDUCTIVE

► The ÜLock Battery and ÜLock Inductive locks are available as BLE variants. These locks can be conveniently controlled with a smartphone. An app compatible with the ÜLock BLE is offered by the providers listed opposite.

The ÜLock BLE offers the possibility of integration into various BLE-enabled access control systems.
(In cooperation with the ZK provider)





The ÜLock-BLE can be integrated into various cloud access control platforms and then adopts the specific functions of the respective system platform in addition to the known general performance features of the ÜLock.



Digital access authorizations can be flexibly assigned and transferred to the end user with the help of the cloud. Management is possible from any Internet-enabled mobile device or computer. This platform is equally suitable for small properties with only one door as well as for large properties. Bitwards is a vendor-independent access and authorization management system from Finland.

Product features:

- › Control via BLE through the Bitwards app
- › Very easy installation and transfer of administrator rights to the operator
- › Schedules to create individual rights
- › Administration via cloud (data protection): authorization of users, management of time profiles, viewing of event logs, „low battery“ info
- › Location navigation function
- › High security standards
- › Multi account administration



Tapkey is an open Access-as-a-Service platform that enables seamless integration of smartphone-based access with existing apps and locking devices. With Tapkey, access permissions can be easily granted, revoked or timed via the smartphone. NFC and Bluetooth allow users to open doors, boxes and more-even without an Internet connection. In the process, Tapkey combines the highest security standards with a unique user experience.

Product features:

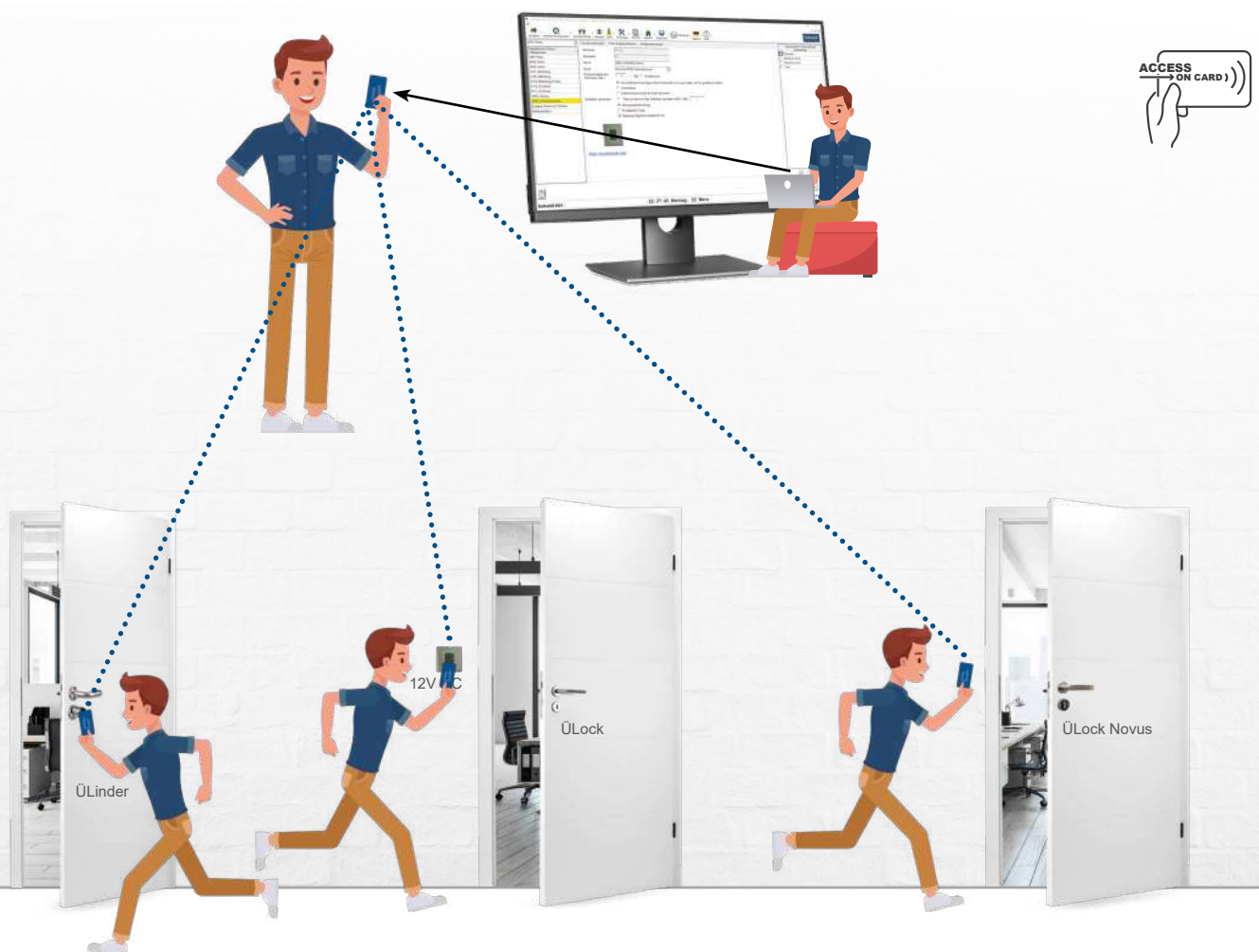
- › Open via BLE and NFC through the Tapkey app
- › Robust Offline-Keys
- › Flexible schedules
- › Intelligent revocation handling
- › Cloud-based (Hosted in EU)
- › Unique integration capabilities (API & SDKs)
- › High security standards

ÜMANAGEMENT 2.0



...offers property managers a high degree of comfort and can therefore be recommended for the smallest buildings as well for large buildings with a large number of users. A software system allows the individual control of access to a building. For example, access can be restricted to certain days of the week or also to

specific hours of the day. The system can also be individualised by creating user groups with different access rights. The data can be easily transferred to Mifare cards using a PC card reader - ACCESS ON CARD.





FEATURES

FLEXIBLE INSTALLATION

- Standard
Customary ease of installation on a computer / Single user version
- SQL Server Installation
For being operated by several workstations

MANAGEMENT OR PROFESSIONAL OPERATIONAL MODE

- Management mode
 - Access authorisation is always allocated to a user group
 - Efficient handling / organisation
 - Ideal for small buildings
- Professional mode
 - Access authorisation can be assigned directly for up to 5 doors (can also be assigned to user groups / e.g. apartment and common rooms)
 - Comprehensive organisational options available

ALLOWS STANDARD ADMINISTRATION OF VARIOUS LOCKS

- ÜLock
- ÜLock Novus
- ÜLinder
- ÜHandle



ADVANTAGES

FOR THE USER

- Only one transponder and not a complete set of keys required
- Low risk with the loss of a transponder

FOR THE OPERATOR

- More comfort and security (e.g. through individual rights / automatic locking e.g. of the entrance)
- No licence fees
- Optimised for retrofitting

FOR THE IN-HOUSE TECHNICIAN

- Easy to use software
- Flexible functions
- Automatic assignment of additional access authorisation (e.g. for entrance door / meeting room)



BENEFIT

INDUSTRY / OFFICES

- Flexible access for staff

RETIREMENT HOMES

- Mrs Huber is given access rights
 - to her apartment
 - Entrances
 - Wellness during the opening hours

HOTEL / APARTMENTS

- Very easy for issuing of guest cards
- Points system e.g. for using Wellness / gym / ...

CLUB / CLUB HOUSE

- Very easy to administrate, no prior knowledge required
- Flexible organisation (e.g. time zones / access rights for new club members ...)

ÜMANAGEMENT 2.0



ÜManagement 2.0 is an innovative platform that makes it easier for you to manage various access devices. With the ÜLock + RFID reader, the ÜHandle as well as the new Ülock Novus and the proven ÜLinder, you have a variety of options to individually control access to your properties.

The simple operation and the high level of comfort make ÜManagement 2.0 an indispensable tool for small and large properties. Whether you have only a few or a large number of users - the platform can be used flexibly and can be perfectly adapted to your needs.



The ÜHANDLE can be mounted on almost any door with moderate security requirements. The electronics and batteries are located in the door handle.



The proven solution consisting of the ÜLock Battery or ÜLock Inductive in combination with the RFID reader to be installed next to the door in the wall. The RFID reader is available with a connection voltage of 12V DC as well as battery-powered.



ÜLOCK+RFID READER

ÜHANDLE

ÜMANAGE



ÜMANAGEMENT

Thanks to the individual configuration, you can tailor the system exactly to your requirements and ensure the highest level of security. ÜManagement 2.0 offers not only efficient management of your access devices, but also a high degree of flexibility and convenience. It is precisely these functions that make ÜManagement 2.0 unique.

ÜLOCK NOVUS, THE LATEST INNO- VATION

The RFID reader is housed in the PZ rosette and the complete electronics are located in the ÜLock. Security, convenience and design are perfectly combined, the retrofit on a conventional door is possible without additional adjustments / drilling.

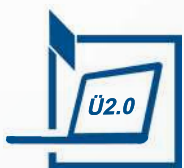


For door situations where retrofitting electronics is costly, the ÜLINDER is the perfect solution. The mechanical cylinder is simply exchanged for the ÜLinder.



ÜLOCK NOVUS

ÜLINDER



MENT 2.0

ÜMANAGEMENT

ÜMANAGEMENT 2.0 SOFTWARE

Access on Card software for organization and management of access authorizations. The software is suitable for convenient organization of objects of any size. Compatibility with the various closures provides maximum flexibility for installation, especially in existing objects.



General product features

- › Compatible products: ÜLock, ÜHandle, ÜLinder, ÜLock Novus
- › Encrypted data transmission
- › Access on Card: user rights are stored on the identification medium by means of a desk reader
- › Classification: users/user groups
- › Time management: time zones/weekdays
- › Access authorization: time-definable
- › Event memory can be read out with the help of a „reader card“
- › Access authorization: individually programmable
- › Operating system: Windows 7 and newer
- › Standard or SQL Server installation
- › Credit function: is loaded with points; points are debited with each access

Performance features

- › 250 buildings
- › 250 corridors per building
- › 68,000 ÜLinder or ÜHandle
- › 15,000,000 ÜManagement RFID readers
- › Users when applying ÜManagement RFID readers and ÜLock Novus: unlimited
- › Authorized users with ÜLinder or ÜHandle: 68,000
- › RFID identification means: Mifare DESFire EV1, EV2 and Mifare Classic 1k, 4k
- › Time zones: unlimited
- › Times per time zone: 2





ÜMANAGEMENT RFID READER

RFID wall reader for direct control of a ÜLock via radio. The light element of the wall reader can shine in white as an orientation aid. The color green confirms access authorization, red signals the lack of access authorization.

Product features:

- › Control ÜLock: Radio 868.3 MHz
- › Card/transponder format: Mifare Classic 1k/4k and DESFire EV1/EV2
- › Reading distance: max. 6 cm
- › Configuration: configuration card is programmed using ÜManagement 2.0 software
- › Operating voltage: 12V DC
- › Dimension: 80 x 80 x 28 mm
- › Installation: standard flush-mounted box
- › Event memory: readout
- › Surface: plastic
- › Color cover frame: silver, anthracite, white
- › Color light element: white, green, red



ÜMANAGEMENT RFID BATTERY READER

ÜManagement RFID flush-mounted reader, Access on Card, Mifare Desfire, incl. transmitter/receiver unit. The reader can be operated either with batteries or a supply voltage of 12V DC. A LED indicates a valid access (green) or a not valid access (red).

Product features:

- › Control ÜLock: Radio 868.3 MHz
- › Card/transponder format: Mifare Classic 1k/4k and DESFire EV1/EV2
- › Reading distance: max. 6 cm
- › Configuration: Configuration card is programmed using ÜManagement 2.0 software
- › Operating voltage: battery powered (3 pieces AAA) or 12V DC
- › Dimension: 80 x 80 x 28 mm
- › Installation: standard flush-mounted box
- › Event memory: readout
- › Surface: plastic color
- › Color cover frame: silver, anthracite, white
- › Color light element: green, red



SURFACE-MOUNTED HOUSING FOR ÜMANAGEMENT FLUSH-MOUNTED RFID READER

Plastic housing for surface mounting of the RFID flush-mounted reader.

Product features:

- › Color: white (silver and anthracite on request)



ÜMANAGEMENT RFID SURFACE MOUNT READER

ÜManagement RFID surface reader, IP65, access on card, for connection to the control unit RU2.

Product features:

- › Output:
 - 1 integrated relay (2 A; 24 V AC/DC)
 - RS-485 for remote control unit RU2
- › Card/transponder format: Mifare Classic 1k/4k and DESFire EV1/EV2
- › Reading distance: max. 6 cm
- › Configuration: configuration card is programmed using ÜManagement 2.0 software
- › Operating voltage: 12V DC
- › Dimension: 51 x 92 x 25 mm
- › Installation: standard flush-mounted box
- › Energy storage: readout
- › Surface: plastic
- › Color LED: silver, black
- › Protection class IP65



ÜMANAGEMENT



CONTROL UNIT RU2

Control unit for Ü-Management reader, enables tamper-proof installation. Reader and control unit are connected via RS485 bus. The control unit provides a potential-free output for controlling on-site actuators (e.g. motor locks, gate drives).

Product features:

- › Mounting: surface mount / top hat rail housing
- › Relay output: 2 x relay (3A/230 VAC; 3A/24 V AC/DC)
- › Relay switching time: pulse (1 to 60 sec) or switching mode (ON/OFF)
- › Buzzer ON/OFF: yes
- › Power supply: 9 - 14 VDC
- › Current consumption: max. 80 mA



ÜLOCK NOVUS BATTERY

Sample stand equipped with a ÜLock Novus Battery full leaf lock.



ÜLOCK-B BATTERY

Sample stand equipped with a ÜLock-B Battery full leaf lock and radio hand-held transmitter.



ÜLOCK-B INDUCTIVE

Sample stand equipped with a ÜLock-B Inductive full leaf lock and radio hand-held transmitter.



ÜLOCK-B INDUCTIVE

Sample stand equipped with a ÜLock-B Inductive tubular frame lock and radio hand-held transmitter.



ÜLOCK-B BATTERY FÜR GLASTÜREN

Sample stand equipped with a ÜLock-B Battery tubular frame lock and radio hand-held transmitter.



ÜMANAGEMENT READER

Sample stand equipped with a ÜManagement RFID reader, including plug-in power supply.



ABACO

ABACO is a surface with antibacterial and antiviral properties from our own production. It offers effective protection against bacteria, germs and especially corona viruses. The surface finish is extremely durable and resistant to wear and tear. Door fittings, such as the ÜBar panic bar, are available with a hygienic ABACO surface finish.

The effectiveness is guaranteed for 20 years (see warranty statement on our website). For more information, see brochure 36.06.4781 or visit www.suedmetall.com



PAULA II - R

Handle set with sturdy metal substructure, turnable composite rosettes, lifting spring, ball bearing Top Speed Comfort, fixed/rotatable bearing, quick mounting system Top Speed, *without allen screw, for highest stress!

Tested according to EN 1906 utilization category 3*/4, DIN 18273, EN 1634-2, EN 179.



HANNA - R

Handle set with sturdy metal substructure, turnable composite rosettes, lifting spring, ball bearing Top Speed Comfort, fixed/rotatable bearing, quick mounting system Top Speed, *without allen screw, for highest stress!

Tested according to EN 1906 utilization category 3*/4, DIN 18273, EN 1634-2, EN 179.



RONNY II - R

Handle set with sturdy metal substructure, turnable composite rosettes, lifting spring, ball bearing Top Speed Comfort, fixed/rotatable bearing, quick mounting system Top Speed, *without allen screw, for highest stress!

Tested according to EN 1906 utilization category 3*/4, DIN 18273, EN 1634-2.

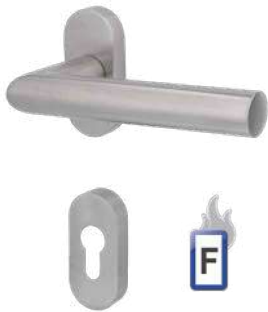


You can find more fittings in our catalog „Fascination Fittings 04“

Order number 36.06.0010

To the interactive PDF →





RONNY II - R



Narrow frame set with sturdy metal substructure, composite rosette, lifting spring, fixed/rotatable bearing, installation is optionally possible with or without dowel technology. The patented fitting system! Tested according to EN 1906 use category 4, DIN 18273.



HANNA - R



Narrow frame set with sturdy metal substructure, composite rosette, lifting spring, fixed/rotatable bearing, installation is optionally possible with or without dowel technology. The patented fitting system! Tested according to EN 1906 usage category 4, DIN 18273, fire protection fitting for emergency exit closure according to DIN EN 179.



PAULA III - R



Narrow frame set with sturdy metal substructure, composite rosette, lifting spring, fixed/rotatable bearing, installation is optionally possible with or without dowel technology. The patented fitting system! Tested according to EN 1906 usage category 4, DIN 18273, fire protection fitting for emergency exit closure according to DIN EN 179.



SICURA PAULA - LS/LS

Stainless steel long shield set with steel substructure. Optional fixed handle shield, right and left usable or lever handle. Fixed/rotatable handle set. From inside concealed (M6 screws).

Cylinder projection 11 - 18 mm for core pull protection version (ZA).

Tested according to DIN 18257 ES1/WB2, ES2/WB3, DIN 18273, fire protection fitting for emergency exit lock according to DIN EN 179.



STAINLESS
STEEL

ALUMINIUM F1

BERLIN - LS

Narrow frame set with fixed/rotatable bearing, cylinder projection 8 - 12 mm, with stable metal substructure and lifting spring on both sides.

Concealed screwed from the inside (M6 screws) for heavy-duty use!



You can find more fittings in our catalog „Fascination Fittings 04“

Order number 36.06.0010

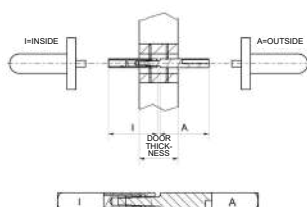
To the interactive PDF →





BREMEN - LS

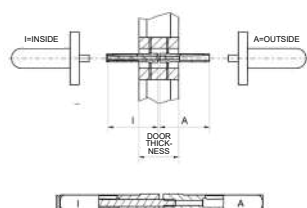
Narrow frame set with fixed/rotatable bearing, with stable metal substructure and lifting-up spring on both sides. Concealed screwed from the inside (screws M5) for heavy duty!



PANIC SPINDLE 9 MM

Square spindle for split lock follower

Outside/Inside	I 50 mm	I 60 mm	I 70 mm	I 80 mm	I 90 mm	I 100 mm
A 50 mm	32.23.8590	32.23.8600	32.23.8610	32.23.8620	32.23.8630	32.23.8640
A 60 mm	32.23.8650	32.23.8660	32.23.8670	32.23.8680	32.23.8690	32.23.8700
A 70 mm	32.23.8710	32.23.8720	32.23.8730	32.23.8740	32.23.8750	32.23.8760
A 80 mm	32.23.8770	32.23.8780	32.23.8790	32.23.8800	32.23.8810	32.23.8820



8/9 MM SPINDLE

Square spindle for split lock follower

Outside/Inside	I 50 mm	I 60 mm	I 70 mm	I 80 mm
A 50 mm	32.23.8830	32.23.8840	32.23.8850	32.23.8860
A 60 mm	32.23.8870	32.23.8880	32.23.8890	32.23.8900
A 70 mm	32.23.8910	32.23.8920	32.23.8930	32.23.8940
A 80 mm	32.23.8950	32.23.8960	32.23.8970	32.23.8980
A 90 mm	32.23.8990	32.23.9000	32.23.9010	32.23.9020
A 100 mm	32.23.9030	32.23.9040	32.23.9940	32.23.9950

ÜBAR PANIC BAR



ÜBAR

Panic bar for use according to EN 1125. Slim and attractive design, surface standard stainless steel. No risk of crushing thanks to gapless cover caps.

Product features:

- › Distance dimension: 72, 88, 92 mm
- › Handle: square 9 mm
- › Rotation angle: 30° (in connection with ÜLock-B) 35° on request
- › Cylinder: profile cylinder(PZ)
- › Door width max. 1.257 mm
- › Body: 90 mm
- › Surface: stainless steel-sat., optionally stainless steel with antimicrobial surface „ABACO“ or with individual coatings

Individual coatings on request.





MIFARE DESFIRE KEY FOB



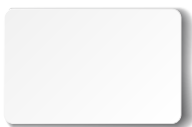
Product features plastic series:

- › Mifare DESFire EV2, 8k, 70pf
- › Material: ABS Novodur plastic
- › Waterproof housing
- › Tamper proof
- › Rugged and shatterproof
- › Dimension: 34,5 x 43,5 x 5 mm
- › Color: blue
- › Customized printing on request



Product features stainless steel series:

- › Mifare DESFire EV2, 8k, 70pf
- › Solid polished stainless steel frame
- › Waterproof case
- › Tamper proof
- › Dimension: 36,5 x 45 x 5,2 mm
- › Color: blue
- › Customer logos and other colors possible at any time



MIFARE DESFIRE CARDS

Plastic cards and chip cards are proven as employee ID cards in daily business life, as access control cards in the corporate environment.

Product features:

- › Mifare DESFire EV2, 8k, 70pf
- › Dimension: 85,6 x 54 mm
- › Color: neutral
- › Customized printing on request



MIFARE DESFIRE STICKER

RFID adhesive labels can be used in a wide variety of applications. Due to their robust nature and single-sided adhesive surface, they can be used on almost any surface where RFID technology is to be used.

The main advantage of an adhesive tag is the quick upgrade of an existing medium with an RFID transponder.

Product features:

- › Mifare DESFire EV2, 8k, 70pf
- › Material: PVC
- › Self-adhesive 3M film
- › Protection class IP68
- › Dimension: d = 27 mm / thickness = 0,6 mm
- › Color: white
- › Customized printing on request

SWITCHING POWER SUPPLIES



SWITCHING POWER SUPPLIES...

... for the power supply of Südmetall systems offer a suitable solution for every requirement and are matched to the Südmetall components (ÜLock Inductive / RFID reader). The flush-mounted power supply units for installation in a standard flush-mounted box are particularly suitable for a decentralized power supply, as there is usually a 230V power supply (for example a socket) near the door.

Alternatively, the power supply unit (version „vending machine rail“) can be mounted in a control cabinet.

With the help of one of the power supply units listed below, the function of the system can be maintained even in the event of a power failure. The use of this option is recommended for particularly sensitive objects.



ELTAKO SNT 61

A feature of the Eltako SNT 61 is the integrated autorecovery function (automatic connection after fault clearance). This protects against overheating and overvoltage.



ELTAKO SNT 12

Eltako SBT 12 is a rail mounted device for DIN-EN 60715 TH35 rail mounting. 1 graduation unit = 18 mm wide, 58 mm deep.



SWITCHING POWER SUPPLY 12V DC; 1,5A (FLUSH-MOUNTED)





The switched-mode power supply is suitable for flush mounting. Due to its small dimensions, combined with its performance, it offers countless application possibilities.



PSU 12V24W

The switching power supply is equipped with protection against overvoltage and short circuit. An LED indicator shows whether the output voltage is properly applied. The PSU 12V24W 1.4Ah additionally enables an emergency power supply with the help of the integrated backup battery LifePo4 1.4A. Thus, the power supply of 12V DC can be maintained in case of a power failure.



	ELTAKO SNT 61 	SWITCHING POWER SUPPLY 12V DC, 1,5A 	ELTAKO SNT 12 	PSU 12V24W 
Mounting	Flush mount	Flush mount	Mounting rail	Mounting rail
Input voltage	230V AC (-20% to +10%)	230V AC	230V AC (-20% to +10%)	230V AC
Output voltage	12V DC	12V DC	12V DC	13,8V DC (Battery operation: 12,8V)
Power	0,5 A	1,5 A	1,0 A	2,0 A
Battery				1,4 Ah
Efficiency	81%	83,5%	83%	
Stabilized output voltage	±1%	±0,5%	±1%	±0,5%
Dimension	45 x 45 x 33 mm	48,5 x 51,5 x 32 mm	18 x 58 mm	123 x 93 x 60 mm
Short circuit proof	✓	✓	✓	✓

ORDERING GUIDE ÜLOCK

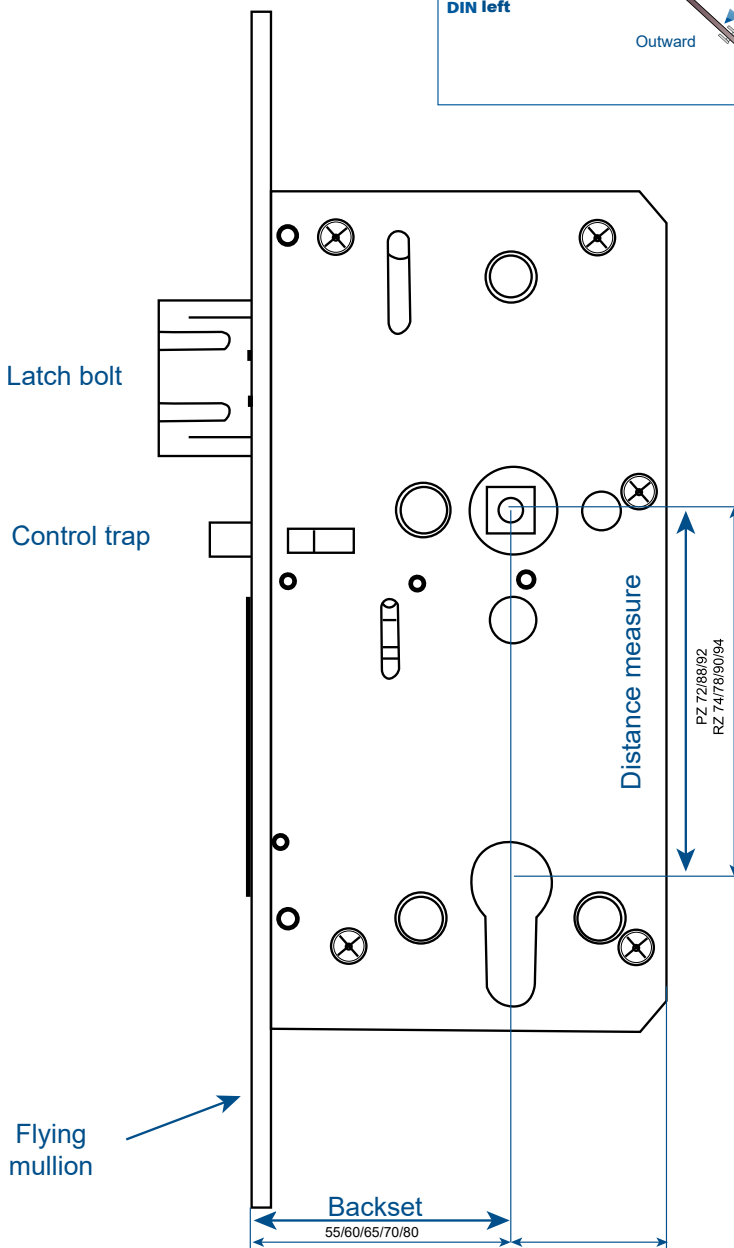
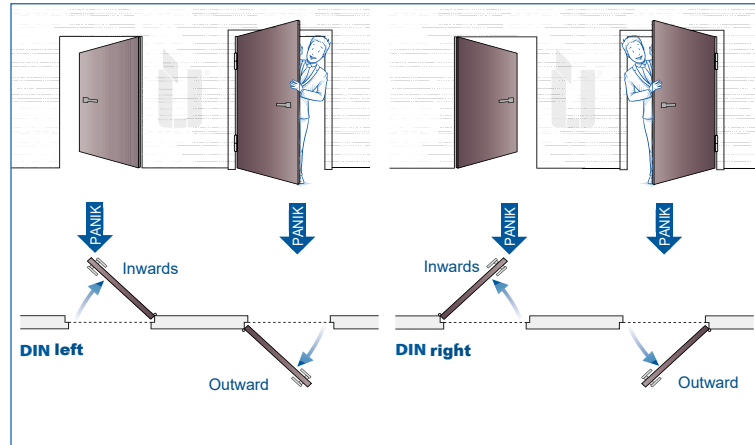
Serie: Battery, Cable or Inductive

Ausführung: Comfort (**untested**),

Premium (**tested** incl. EN 179, EN 1125, EN 14846, EN 1634)

DIN: left/right

Opening direction: opening inwards/outwards



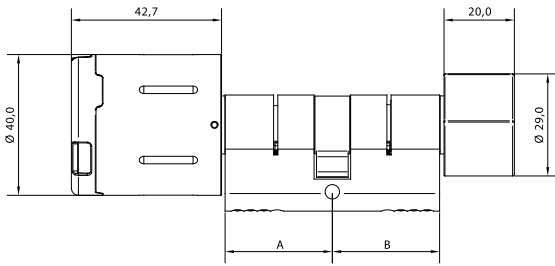
To the ÜLock order sheet



Strike plates are **NOT** included with ÜLock Battery.



Examples for the overall dimension of the electrical cylinder.



A = e. g. locking side in 35 mm
B = e. g. knob side in 35 mm
 = cylinder size, e. g. in 35/35 mm



Note:

A = always outside
B = always inside

Outside = Measurement from the centre of the flying mullion screw to the outer edge of the rosette or the fitting on the outside part of the door.

Inside = Measurement from the centre of the flying mullion screw to the outer edge of the rosette or the fitting on the inside part of the door.

Minimum dimension of the profile cylinder 26/26 mm or 30/30 mm, each side extendable in 5 mm increments up to a maximum length of 200 mm on each side.

OUTSIDE

INSIDE

Door leaf outside

Door leaf inside

Fixing screw

Rosette

Südmittel has numerous door handle sets in its product range. The catalogue Faszination Beschläge (Art. No. 36.06.0010 with 727 pages) contains our complete assortment.

Cylinder flying mullion screw

Fixing screw

Knob side

Outside overmeasure with rosette or fitting

Locking side

Inside overmeasure with rosette or fitting

Door thickness



Südmetall®

Sales & Logistics: Süd-Metall Beschläge GmbH

Sägwerkstrasse 5 | 83404 Ainring / Hammerau | T +49 (0) 8654 4675-50 | F +49 (0) 8654 4675-70

Email: info@suedmetall.com | www.suedmetall.com

Development & Production: Süd-Metall Schließsysteme Leipzig GmbH

Apelsteinallee 1 | 04416 Markkleeberg | www.suedmetall-schliesssysteme.com

All information provided subject to typographical colour deviations and printing errors.

The terms of payment and delivery on our website apply. The general terms and conditions (AGB) of Süd-Metall Beschläge GmbH apply. Please note the warranty on our website. Art.-No.: 36.06.4765

We, the company SÜD-METALL BESCHLÄGE GMBH, Sägwerkstraße 5, D - 83404 Ainring / Hammerau, are responsible in terms of data protection law. Insofar as you are not yet a customer of ours or if you have not voluntarily provided us with your data to establish contact, your data originate from our own research in resources available through the public domain, e.g. trade directories, network platforms, company registers and the like. Your data are being processed for marketing purposes without your consent according to Section 6 Subsection 1 S. 1 lit f) GDPR to enable us to meet information needs. In all cases you may contact us at any time to object to a future processing of these data for marketing purposes. More information about your other rights, for example regarding information, corrections, deletions, your right to complain and information concerning our data protection official is contained in our data protection declaration which you can access at <https://www.suedmetall.com/4/datenschutz/> and in our information sheet which you can access at https://www.suedmetall.com/fileadmin/user_upload/downloads/Information_Datenschutz_D-EN.pdf.